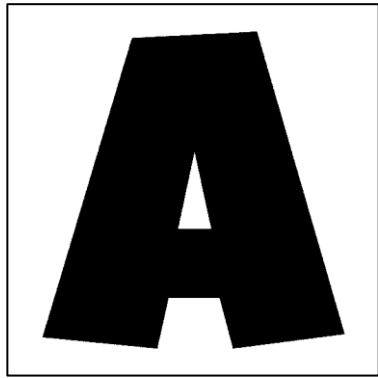


# Vector Logo Image Synthesis Using Differentiable Renderer

shape image



text prompt

“Mt. Fuji”

Generate



output

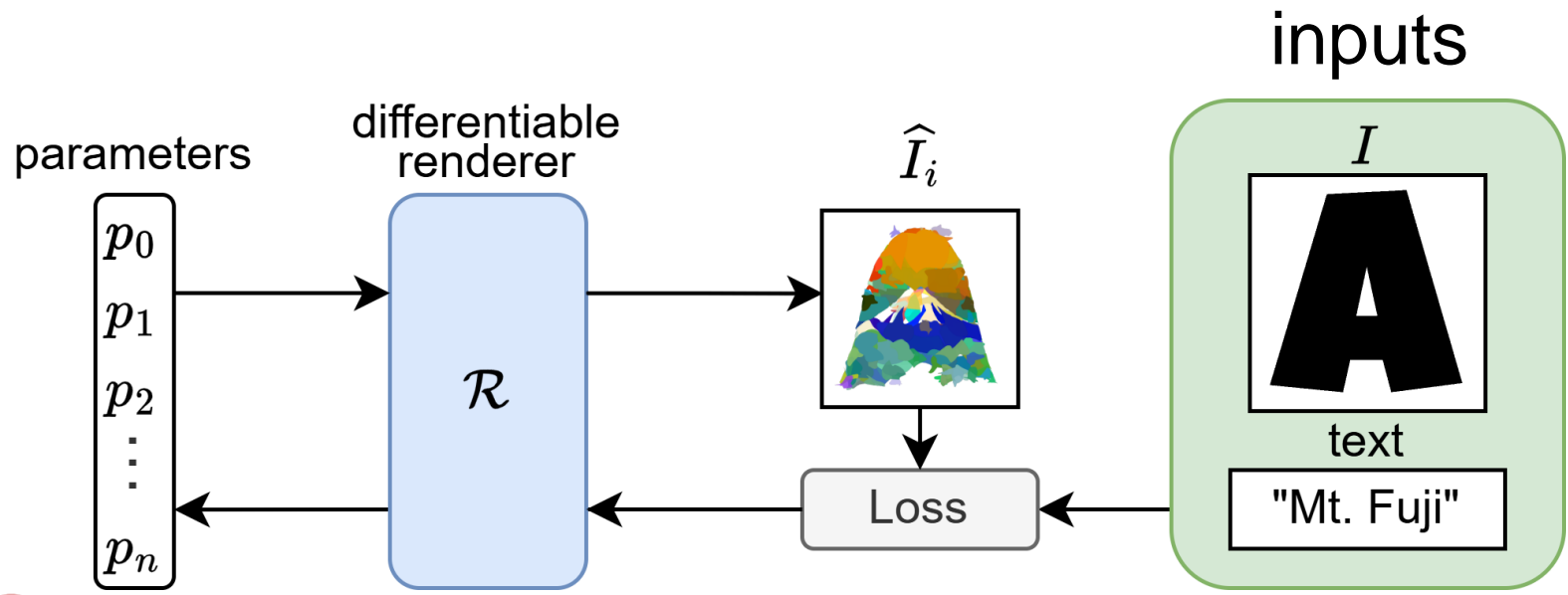


Stabilize the shape of vector paths



# Abstract

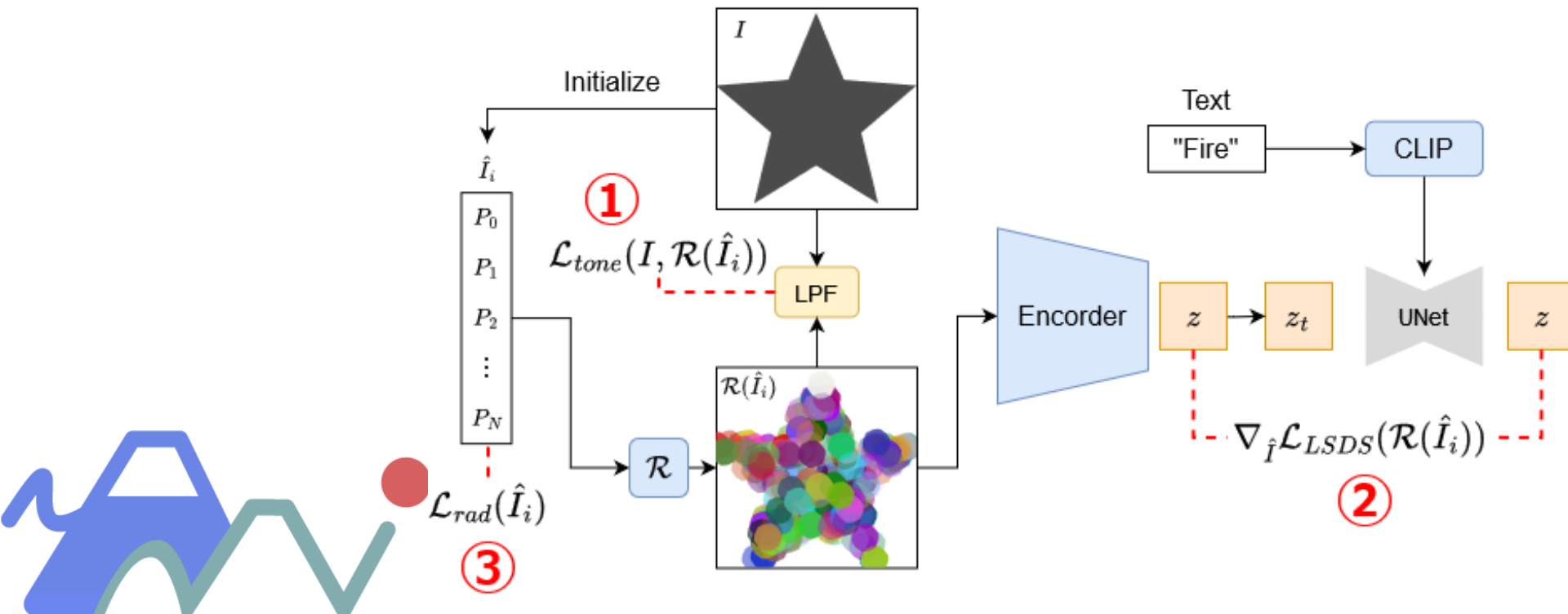
- Generate vector images from text and shape image inputs.
- Optimize vector parameters directory with differentiable render<sup>[1]</sup>.



# Abstract

- Loss Functions

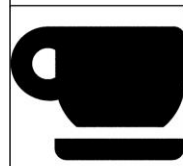
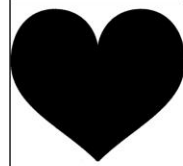
1. Tone Preserving Loss; reflect input image shape
2. SDS Loss; reflect input text contents
3. Radiation Loss; observe vector path parameters



# Result



input  
image



Mt.Fuji

a leaf

The great wave  
off Kanagawa

a cat

heart

a margarita